



BERMA GEARBOXES

 MADE IN ITALY



is a brand of  **REGGIANA
RIDUTTORI**
PLANETARY REDUCTION GEAR





FLOOR DRIVE SOLUTIONS

FOR AGRICULTURE

Berma is a leader in the design and manufacturing of components for manure spreaders and gearboxes.

Active since 1976, its leadership focuses on the production of components for manure spreaders, which, together with its excellent position in the Po Valley, make it a great interpreter of the needs of the agricultural market around the world.

In 2021 it was acquired - through Reggiana Riduttori - by the Interpump Group, with the aim of strengthening the group's specialization in the sector of new transmission technologies dedicated to agriculture and in the engineering of solutions in a circular economy perspective.

In 2022, with the company merger, Berma becomes a Reggiana Riduttori brand.

The company now covers an area of 22,000 square meters of which 5,000 are dedicated to the processing, assembly and storage phases of our components.

Berma è leader nella progettazione e realizzazione di componenti per spandiletame e scatole ingranaggi.

Attiva sin dal 1976, incentra il suo primato sulla produzione di componenti per carri spandiletame, che, insieme all'ottimale posizione in territorio padano, la rendono una grande interprete delle esigenze del mercato agricolo di tutto il mondo. Nel 2021 viene acquisita - attraverso Reggiana Riduttori - dal Gruppo Interpump, con l'obiettivo di rafforzare la specializzazione del gruppo nel settore delle nuove tecnologie di trasmissione dedicate all'agricoltura e nell'ingegnerizzazione di soluzioni in un'ottica di economia circolare.

Nel 2022, con la fusione societaria, Berma diventa un brand di Reggiana Riduttori.

L'azienda ricopre oggi una superficie di 22.000 metri quadri di cui 5.000 dedicati alle fasi della lavorazione, montaggio e stoccaggio dei nostri articoli.

LESS OVERALL DIMENSIONS

100% MANUFACTURED IN ITALY

INCREASING THE TORQUE OF YOUR ORBITAL MOTOR

NEW GEARBOXES FOR

YOUR BELT OR CHAIN DRIVE

RT 45



CODE	OUTPUT SHAFT E8	KEY E8	INPUT SHAFT	WEIGHT KG.	RATIO	OUTPUT TORQUE Nm
BI9247	Ø30	8	Ø25	11	1.9:1	450
BI9233	Ø35	10				
BI9232	Ø1 3/8" Z6					

RT 50



CODE	OUTPUT SHAFT E8	KEY E8	INPUT SHAFT	WEIGHT KG.	RATIO	OUTPUT TORQUE Nm
BI15844	Ø30	8	Ø25	11	1.9:1	500
BI15845	Ø35	10				
BI15846	Ø1 3/8" Z6					
BI15847	Ø30	8	Ø32	11	1.9:1	500
BI15848	Ø35	10				
BI15849	Ø1 3/8" Z6					

RT 90



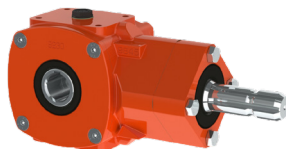
CODE	OUTPUT SHAFT E8	KEY E8	INPUT SHAFT	WEIGHT KG.	RATIO	OUTPUT TORQUE Nm
BI9257	Ø30	8	Ø25	12	3.1:1	900
BI9258	Ø35	10				
BI9260	Ø1 3/8" Z6					

RT 90-EC



CODE	OUTPUT SHAFT E8	KEY E8	INPUT SHAFT	WEIGHT KG.	RATIO	OUTPUT TORQUE Nm
BI13694	Ø30	8	Ø25	13	3.1:1	900
BI13695	Ø35	10				
BI13696	Ø1 3/8" Z6					
BI13697	Ø30	8	Ø32	13	3.1:1	900
BI13475	Ø35	10				
BI13698	Ø1 3/8" Z6					

RT 90-EC + PDF



CODE	OUTPUT SHAFT E8	KEY E8	INPUT SHAFT	WEIGHT KG.	RATIO	OUTPUT TORQUE Nm
BI16792	Ø30	8	Ø1 3/8" Z6	17	3.1:1	900
BI16793	Ø35	10				
BI16794	Ø1 3/8" Z6					

RT 100



CODE	OUTPUT SHAFT E8	KEY E8	INPUT SHAFT	WEIGHT KG.	RATIO	OUTPUT TORQUE Nm
15683	Ø35	10	Ø25	14	3.1:1	1000
15542	Ø40	12				
15684	Ø35	10	Ø32			
15531	Ø40	12				



RT 100 + PDF



CODE	OUTPUT SHAFT E8	KEY E8	INPUT SHAFT	WEIGHT KG.	RATIO	OUTPUT TORQUE Nm
B17675	Ø35	10	Ø1 3/8" Z6	18	3.1:1	1000
BI17676	Ø40	12				

RT 110



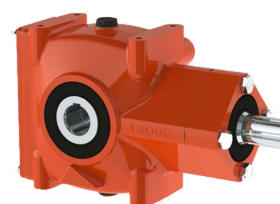
CODE	OUTPUT SHAFT E8	KEY E8	INPUT SHAFT	WEIGHT KG.	RATIO	OUTPUT TORQUE Nm
BI18697	Ø35	10	Ø25	15	3.1:1	1000
BI18214	Ø40	12				
BI18698	Ø35	10	Ø32			
BI18215	Ø40	12				

RT 120



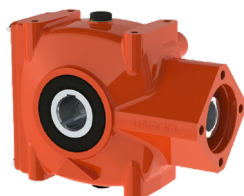
CODE	OUTPUT SHAFT E8	KEY E8	INPUT SHAFT	WEIGHT KG.	RATIO	OUTPUT TORQUE Nm
BI13106	Ø35	10	Ø25	19	4.1:1	1200
BI13039	Ø40	12				
BI16686	Ø1 3/8" Z6					

RT 120 + PDF



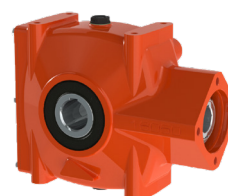
CODE	OUTPUT SHAFT E8	KEY E8	INPUT SHAFT	WEIGHT KG.	RATIO	OUTPUT TORQUE Nm
BI16805	Ø35	10	Ø1 3/8" Z6	22	4.1:1	1200
BI16806	Ø40	12				
BI16807	Ø1 3/8" Z6					

RT 130



CODE	OUTPUT SHAFT E8	KEY E8	INPUT SHAFT	WEIGHT KG.	RATIO	OUTPUT TORQUE Nm
BI18601	Ø35	10	Ø25	20	4.1:1	1300
BI18602	Ø40	12				
BI18603	Ø35	10	Ø32			
BI 18604	Ø40	12				

RT 145

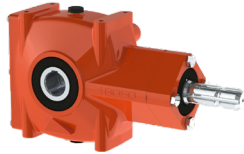


CODE	OUTPUT SHAFT E8	KEY E8	INPUT SHAFT	WEIGHT KG.	RATIO	OUTPUT TORQUE Nm
BI15996	Ø35	10	Ø25	21	4.1:1	1400
BI15997	Ø40	12				
BI15998	Ø35	10	Ø32			
BI15999	Ø40	12				

*Other shaft solutions available on request

NEW GEARBOXES FOR YOUR BELT OR CHAIN DRIVE

RT 145 + PDF



CODE	OUTPUT SHAFT E8	KEY E8	INPUT SHAFT	WEIGHT KG.	RATIO	OUTPUT TORQUE Nm
BI17678	Ø35	10	Ø1 3/8" Z6	25	4.1:1	1400
BI17679	Ø40	12				

RT 150



CODE	OUTPUT SHAFT E8	KEY E8	INPUT SHAFT	WEIGHT KG.	RATIO	OUTPUT TORQUE Nm
BI8839	Ø35	10	Ø25	20	12:1	1500
BI8840	Ø40	12				

RT 160



CODE	OUTPUT SHAFT E8	KEY E8	INPUT SHAFT	WEIGHT KG.	RATIO	OUTPUT TORQUE Nm
BI8977	Ø35	10	Ø25	22	8.4:1	1500
BI8978	Ø40	12				

RT 170



CODE	OUTPUT SHAFT E8	KEY E8	INPUT SHAFT	WEIGHT KG.	RATIO	OUTPUT TORQUE Nm
BI19912	Ø35	10	Ø25	19	8.4:1	1500
BI19913	Ø40	12				
BI19914	Ø35	10	Ø32			
BI19915	Ø40	12				

RT 190



CODE	OUTPUT SHAFT E8	KEY E8	INPUT SHAFT	WEIGHT KG.	RATIO	OUTPUT TORQUE Nm
BI10323	Ø35	10	Ø25	28	10.2:1	1900
BI10324	Ø40	12				
BI10325	Ø45	12				

RT 195



CODE	OUTPUT SHAFT E8	KEY E8	INPUT SHAFT	WEIGHT KG.	RATIO	OUTPUT TORQUE Nm
BI19892	Ø35	10	Ø25	24	10.2:1	1900
BI19893	Ø40	12				
BI19894	Ø45	12				
BI19895	Ø35	10	Ø32			
BI19896	Ø40	12				
BI19897	Ø45	12				

RT 200



CODE	OUTPUT SHAFT E8	KEY E8	INPUT SHAFT	WEIGHT KG.	RATIO	OUTPUT TORQUE Nm
BI9356	Ø35	10	Ø25	27	16.4:1	2000
BI9357	Ø40	12				
BI9358	Ø45	12				

RT 210



CODE	OUTPUT SHAFT E8	KEY E8	INPUT SHAFT	WEIGHT KG.	RATIO	OUTPUT TORQUE Nm
BI17245	Ø35	10	Ø25	27	16.4:1	2000
BI17246	Ø40	12				
BI17247	Ø45	12				



RT 250



CODE	OUTPUT SHAFT E8	KEY E8	INPUT SHAFT	WEIGHT KG.	RATIO	OUTPUT TORQUE Nm
BI14883	Ø40	12	Ø25	34	21.1:1	2600
BI14884	Ø45	12				
BI14885	Ø50	14				

RT 260



CODE	OUTPUT SHAFT E8	KEY E8	INPUT SHAFT	WEIGHT KG.	RATIO	OUTPUT TORQUE Nm
BI16821	Ø40	12	Ø25	36	21.1:1	2600
BI16822	Ø45	12				
BI16823	Ø50	14				

RT 300



CODE	OUTPUT SHAFT E8	KEY E8	INPUT SHAFT	WEIGHT KG.	RATIO	OUTPUT TORQUE Nm
BI8900	Ø35	10	Ø25	34	29.5:1	3000
BI8640	Ø40	12				
BI8670	Ø45	12				

RT 320



CODE	OUTPUT SHAFT E8	KEY E8	INPUT SHAFT	WEIGHT KG.	RATIO	OUTPUT TORQUE Nm
BI16661	Ø35	10	Ø25	33	29.5:1	3000
BI16662	Ø40	12				
BI16663	Ø45	12				

RT 330



CODE	OUTPUT SHAFT E8	KEY E8	INPUT SHAFT	WEIGHT KG.	RATIO	OUTPUT TORQUE Nm
BI21001	Ø40	12	Ø25	38	3.1:1	3000
BI21002	Ø45	12				
BI21003	Ø50	14				
BI21004	Ø40	12	Ø32			
BI21005	Ø45	12				
BI21006	Ø50	14				

RT 350



CODE	OUTPUT SHAFT E8	KEY E8	INPUT SHAFT	WEIGHT KG.	RATIO	OUTPUT TORQUE Nm
BI10318	Ø40	12	Ø25	39	31.4:1	3500
BI10319	Ø45	12				
BI10320	Ø50	14				

RT 350I



CODE	OUTPUT SHAFT E8	KEY E8	INPUT SHAFT	WEIGHT KG.	RATIO	OUTPUT TORQUE Nm
BI17401	Ø40	12	Ø25	38	31.4:1	3500
BI17402	Ø45	12				
BI17403	Ø50	14				

*Other shaft solutions available on request

NEW GEARBOXES FOR

YOUR BELT OR CHAIN DRIVE

RT 360



CODE	OUTPUT SHAFT E8	KEY E8	INPUT SHAFT	WEIGHT KG.	RATIO	OUTPUT TORQUE Nm
17995	Ø40	12	Ø25	38	31.4:1	3500
17996	Ø45	12				
17997	Ø50	14				

RT 360 + PDF



CODE	OUTPUT SHAFT E8	KEY E8	INPUT SHAFT	WEIGHT KG.	RATIO	OUTPUT TORQUE Nm
18005	Ø40	12	Ø1 3/8" Z6	41	31.4:1	3500
18006	Ø45	12				
18007	Ø50	14				

RT 400



CODE	OUTPUT SHAFT E8	KEY E8	INPUT SHAFT	WEIGHT KG.	RATIO	OUTPUT TORQUE Nm
BI9160	Ø45	12	Ø25	44	35.2:1	3900
BI9161	Ø50	14				
BI9162	Ø55	16				

RT 400 2V



CODE	OUTPUT SHAFT E8	KEY E8	INPUT SHAFT	WEIGHT KG.	RATIO	OUTPUT TORQUE Nm
BI9220	Ø45	12	Ø25	55	1) 35.2:1 2) 17.8:1	3900
BI9221	Ø50	14				
BI9222	Ø55	16				

RT 420



CODE	OUTPUT SHAFT E8	KEY E8	INPUT SHAFT	WEIGHT KG.	RATIO	OUTPUT TORQUE Nm
BI15801	Ø45	12	Ø25	43.4	35.2:1	4000
BI15802	Ø50	14				
BI15803	Ø55	16				

RT 430 B



CODE	OUTPUT SHAFT E8	KEY E8	INPUT SHAFT	WEIGHT KG.	RATIO	OUTPUT TORQUE Nm
BI16052	Ø45	12	Ø32	53	10.9:1	4300
BI16053	Ø50	14				
BI16054	Ø55	16				



RT 500



CODE	OUTPUT SHAFT E8	KEY E8	INPUT SHAFT	WEIGHT KG.	RATIO	OUTPUT TORQUE Nm
8981	Ø50	14	Ø25	53	43.6:1	5000
8982	Ø55	16				
9063	Ø60	18				

RT 500 + PDF



CODE	OUTPUT SHAFT E8	KEY E8	INPUT SHAFT	WEIGHT KG.	RATIO	OUTPUT TORQUE Nm
10408	Ø50	14	Ø1 3/8" Z6	56	43.6:1	5000
16809	Ø55	16				
16810	Ø60	18				

RT 520



CODE	OUTPUT SHAFT E8	KEY E8	INPUT SHAFT	WEIGHT KG.	RATIO	OUTPUT TORQUE Nm
BI16001	Ø50	14	Ø25	53	43.6:1	5000
BI16002	Ø55	16				
BI16003	Ø60	18				

RT 650



CODE	OUTPUT SHAFT E8	KEY E8	INPUT SHAFT	WEIGHT KG.	RATIO	OUTPUT TORQUE Nm
BI15376	Ø55	16	Ø25	67	37.8:1	6400
BI15377	Ø60	18				
BI15378	Ø65	18				
BI15379	Ø55	16	Ø32			
BI15380	Ø60	18				
BI15381	Ø65	18				

RT 800



CODE	OUTPUT SHAFT E8	KEY E8	INPUT SHAFT	WEIGHT KG.	RATIO	OUTPUT TORQUE Nm
BI9479	Ø55	16	Ø25	79	31.7:1	8000
BI9470	Ø60	18				
BI9480	Ø65	18				
BI9481	Ø55	16	Ø32			
BI9482	Ø60	18				
BI9483	Ø65	18				

RT 1000



CODE	OUTPUT SHAFT E8	KEY E8	INPUT SHAFT	WEIGHT KG.	RATIO	OUTPUT TORQUE Nm
BI13438	Ø60	18	Ø25	97	38.7:1	9700
BI13439	Ø65	18				
BI13440	Ø70	20				
BI13441	Ø60	18	Ø32			
BI13442	Ø65	18				
BI13443	Ø70	20				

*Other shaft solutions available on request

MANURE SPREADER



Other applications

SALT SPREADER

TURF & LIME SPREADER

SUGAR BEET & POTATO HARVESTER

STRAW BLOWER

CONVEYORS

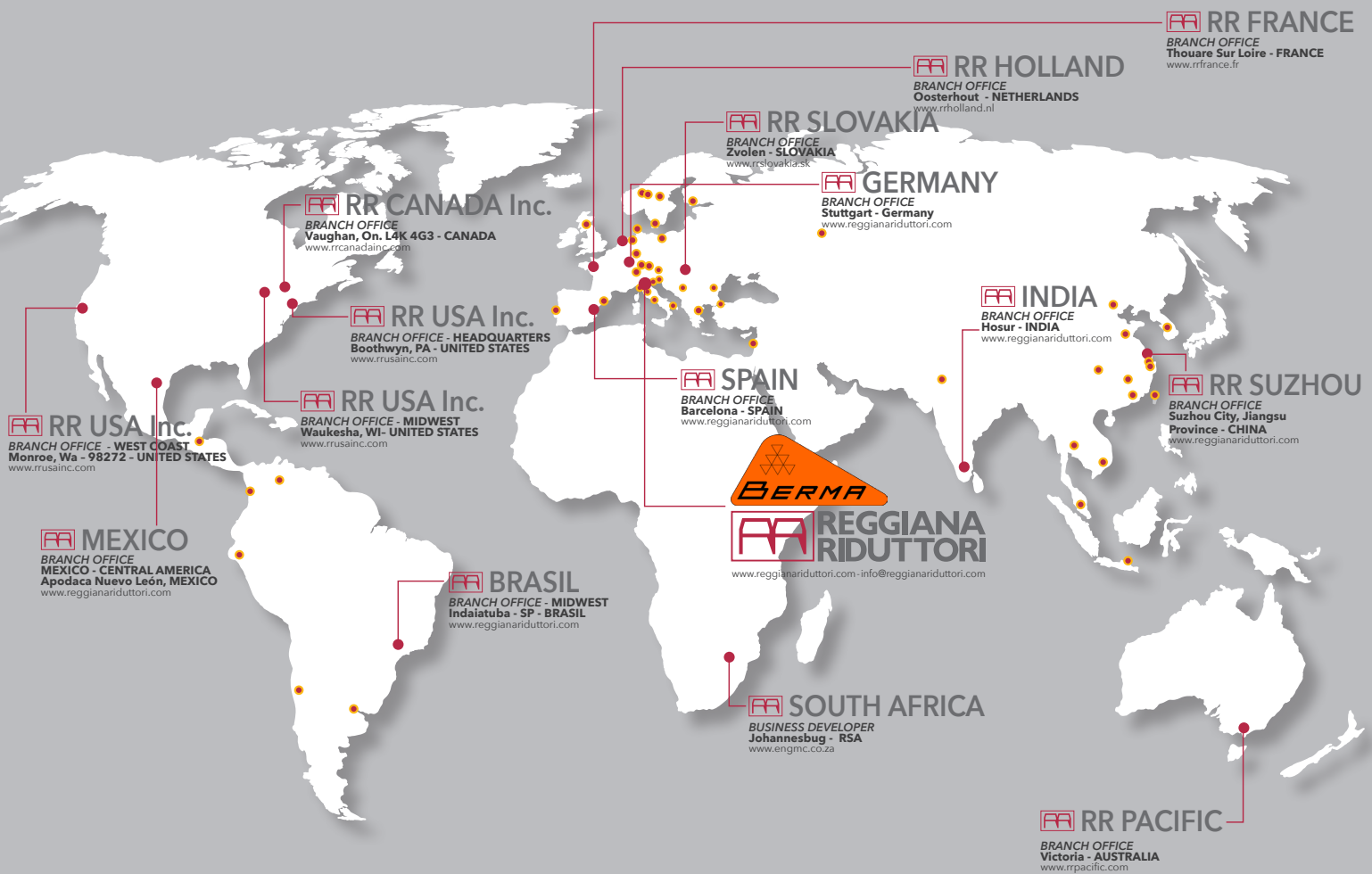
CONCRETE MIXER

GLOBAL

SALES NETWORK

● MASTER DISTRIBUTOR

● BRANCH



www.berma.it

REGGIANA RIDUTTORI S.r.l.

Via Martiri di Marzabotto,7
42020 - S. Polo d'Enza (RE) - ITALY
tel. +39.0522.259111 - fax +39.0522.874321
info@reggianariduttori.com

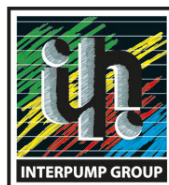
BERMA BUSINESS UNIT

Strada 1° Maggio, 1 | 46010 Gazzuolo (MN) ITALY
info@berma.it | Ph. +39 0376 97315



is a brand of Reggiana
Riduttori Srl

A member of



 **REGGIANA
RIDUTTORI**
PLANETARY REDUCTION **GEARS**