



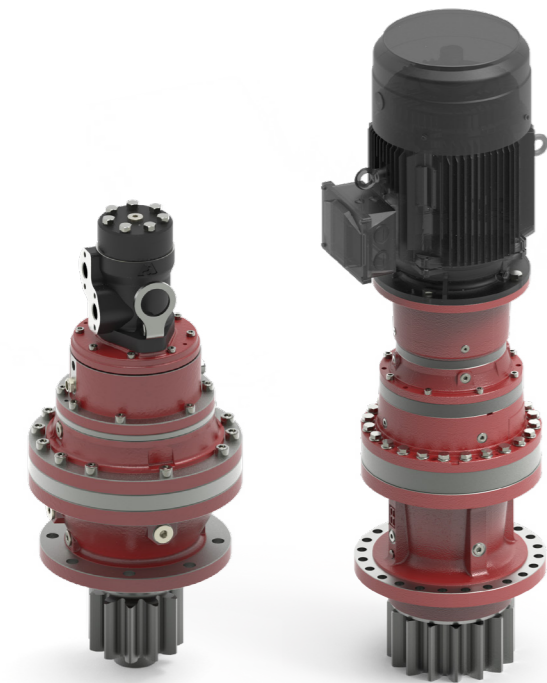
# SLEWING DRIVES

 MADE IN ITALY

 **REGGIANA  
RIDUTTORI**  
PLANETARY REDUCTION **GEARS**

## OUR DRIVES FOR SLEWING

This wide range of Reggiana Riduttori slewing drive series is suitable for the most severe duties in every environment. **Durability, reliability and strenght** are the leading values that drive RR team while designing and manufacturing units for deck / offshore cranes, truck mounted cranes, forestry machines, drilling machines, and also wind turbine or special equipment industries.

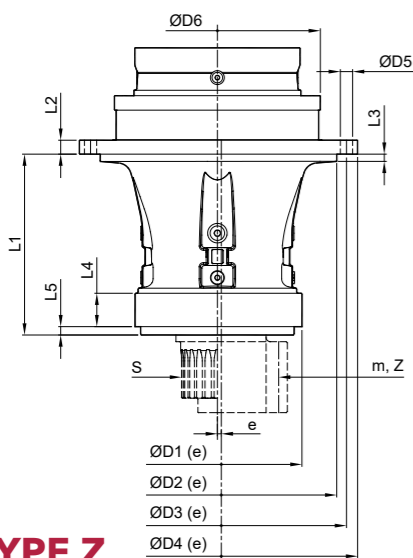


### BRAKE OPTIONS

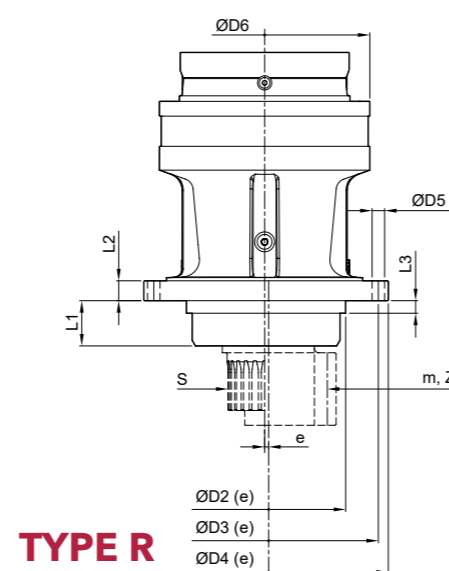
- Hydraulically released parking brake on request

### KEY OPTIONS

- Flange mounted
- Output shaft: splined or with integral pinion
- Strong construction
- Output shafts supported by heavy duty capacity bearings
- Pinion side bearing lubricated by longlife grease
- Flexible input configuration (bevel gear, brakes)
- ATEX, DNV TA certified. Available certification from all the main certification bodies.



**TYPE Z**



**TYPE R**

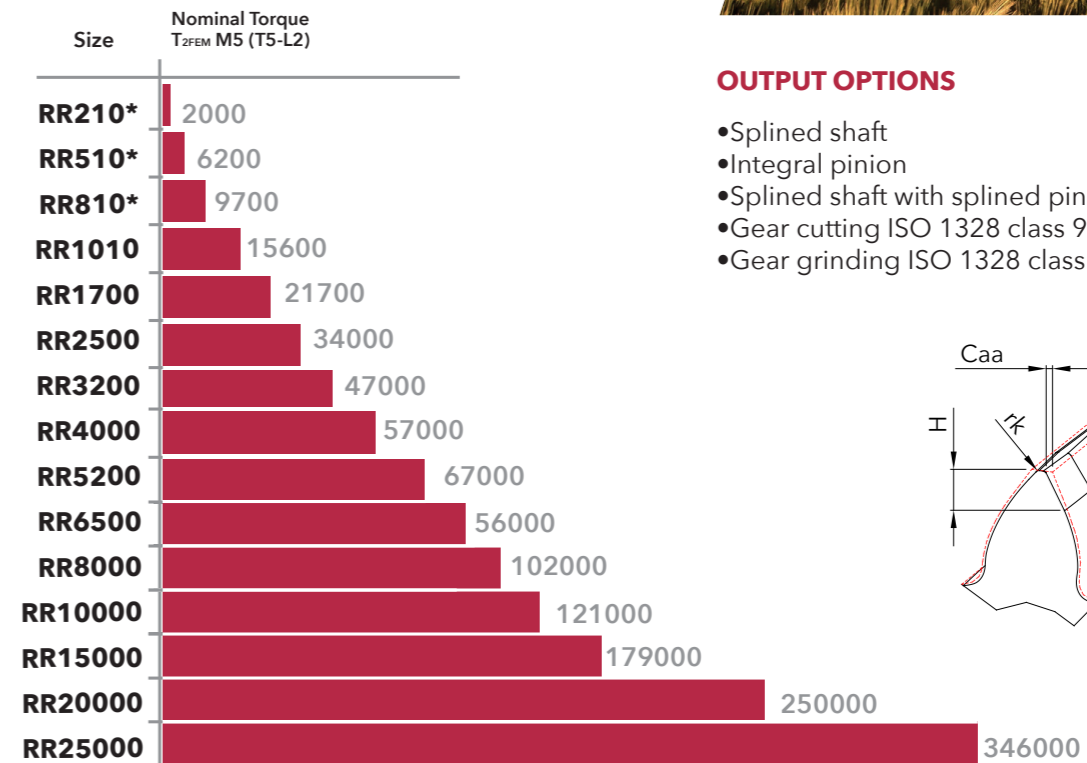
### APPLICABLE MOTORS

- Hydraulic piston motors
- Hydraulic orbital motors
- Electric motors IEC
- Electric motors NEMA

### CONSTRUCTION FEATURES

- High transmissible torque
- High radial/thrust load capacity
- Wide range of modular gearboxes
- Wide range of reduction ratios (from 11 up to 2495)

## TECHNICAL DATA



\* Available on request

| SIZE - TYPE | D1     | D2     | D3  | D4  | D5         | D6  | e   | L1   | L2 | L3 | L4  | L5 | S                       | AVAILABLE m, Z |
|-------------|--------|--------|-----|-----|------------|-----|-----|------|----|----|-----|----|-------------------------|----------------|
| RR1010 Z    | 250 f7 | 280 f7 | 380 | 420 | Ø17.5 n°24 | 320 | 1   | 284  | 20 | 15 | 80  | -  | DIN5480 W120x3x30x38 8f | 10 ÷ 14        |
| RR1010 R    | -      | 230 f7 | 295 | 325 | Ø18 n°10   | 320 | -   | 34.5 | 24 | 10 | -   | -  | DIN5482 B80x74 e9       | 10 ÷ 14        |
| RR1700 Z    | 250 f7 | 280 f7 | 380 | 420 | Ø17.5 n°24 | 340 | 1   | 284  | 20 | 15 | 80  | -  | DIN5480 W120x3x30x38 8f | 10 ÷ 14        |
| RR1700 R    | -      | 255 f7 | 314 | 375 | Ø18 n°10   | 340 | 1.5 | 80   | 30 | 25 | -   | -  | DIN5480 W120x3x30x38 8f | 10 ÷ 14        |
| RR2500 Z    | 300 f7 | 425 f7 | 460 | 500 | Ø22 n°24   | 368 | 2.5 | 325  | 25 | 13 | 70  | -  | DIN5480 W130x5x30x24 8f | 14 ÷ 18        |
| RR2500 R    | -      | 280 f7 | 395 | 429 | Ø22 n°24   | 368 | 2.5 | 80   | 35 | 80 | -   | -  | DIN5480 W130x5x30x24 8f | 14 ÷ 18        |
| RR3200 Z    | 300 f7 | 425 f7 | 460 | 500 | Ø22 n°24   | 403 | 2.5 | 325  | 25 | 13 | 70  | -  | DIN5480 W130x5x30x24 8f | 14 ÷ 18        |
| RR3200 R    | -      | 280 f7 | 395 | 429 | Ø22 n°24   | 403 | 2.5 | 80   | 35 | 80 | -   | -  | DIN5480 W130x5x30x24 8f | 14 ÷ 18        |
| RR4000 Z    | 340 f7 | 400 f7 | 510 | 555 | Ø22 n°24   | 455 | 2.5 | 420  | 25 | 15 | 70  | 20 | DIN5480 W170x5x30x32 8f | 16 ÷ 20        |
| RR4000 R    | -      | 410 f7 | 450 | 490 | Ø22 n°24   | 455 | 2.5 | 110  | 40 | 20 | -   | -  | DIN5480 W170x5x30x32 8f | 16 ÷ 20        |
| RR5200 Z    | 340 f7 | 400 f7 | 510 | 555 | Ø22 n°24   | 455 | 2.5 | 420  | 25 | 15 | 70  | 20 | DIN5480 W170x5x30x32 8f | 16 ÷ 20        |
| RR5200 R    | -      | 410 f7 | 450 | 490 | Ø22 n°24   | 455 | 2.5 | 110  | 40 | 20 | -   | -  | DIN5480 W170x5x30x32 8f | 16 ÷ 20        |
| RR6500 Z    | 370 f7 | 540 f7 | 580 | 620 | Ø22 n°28   | 510 | 2.5 | 517  | 30 | 15 | 90  | 34 | DIN5480 W170x5x30x32 8f | 18 ÷ 22        |
| RR6500 R    | -      | 420 f7 | 490 | 530 | Ø22 n°24   | 510 | 2.5 | 140  | 40 | 25 | -   | -  | DIN5480 W170x5x30x32 8f | 18 ÷ 22        |
| RR8000 Z    | 420 f7 | 600 f7 | 650 | 700 | Ø26 n°28   | 565 | 2.5 | 577  | 30 | 20 | 100 | 32 | DIN5480 W200x5x30x38 8f | 20 ÷ 24        |
| RR8000 R    | -      | 460 f7 | 510 | 565 | Ø26 n°24   | 565 | 2.5 | 173  | 40 | 25 | -   | -  | DIN5480 W200x5x30x38 8f | 20 ÷ 24        |
| RR10000 Z   | 420 f7 | 600 f7 | 650 | 700 | Ø26 n°28   | 565 | 2.5 | 577  | 30 | 20 | 100 | 32 | DIN5480 W200x5x30x38 8f | 20 ÷ 24        |
| RR10000 R   | -      | 460 f7 | 510 | 565 | Ø26 n°24   | 565 | 2.5 | 173  | 40 | 25 | -   | -  | DIN5480 W200x5x30x38 8f | 20 ÷ 24        |
| RR15000 Z   | 480 f7 | 650 f7 | 720 | 775 | Ø26 n°32   | 640 | 5   | 585  | 35 | 20 | 150 | 40 | DIN5480 W220x5x30x42 8f | 22 ÷ 26        |
| RR15000 R   | -      | 555 f7 | 600 | 650 | Ø30 n°32   | 640 | 5   | 145  | 45 | 25 | -   | -  | DIN5480 W220x5x30x42 8f | 22 ÷ 26        |
| RR20000 Z   | 500 f7 | 740 f7 | 800 | 865 | Ø30 n°32   | 720 | 5   | 705  | 40 | 22 | 170 | 40 | DIN5480 W280x8x30x34 8f | 24 ÷ 30        |
| RR20000 R   | -      | 630 f7 | 680 | 740 | Ø30 n°32   | 720 | 5   | 150  | 50 | 25 | -   | -  | DIN5480 W280x8x30x34 8f | 24 ÷ 30        |
| RR25000 Z   | 520 f7 | 835 f7 | 900 | 970 | Ø33 n°36   | 810 | 5   | 835  | 45 | 25 | 175 | 40 | DIN5480 W280x8x30x34 8f | 24 ÷ 30        |
| RR25000 R   | -      | 700 f7 | 770 | 840 | Ø33 n°36   | 810 | 5   | 150  | 55 | 30 | -   | -  | DIN5480 W280x8x30x34 8f | 24 ÷ 30        |

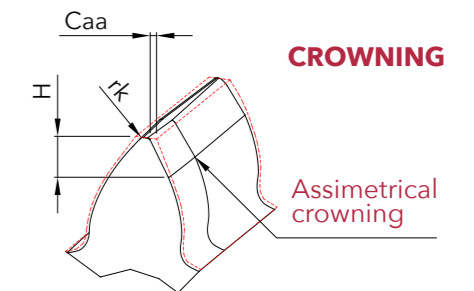
Number of teeth of pinion upon request

### OUTPUT OPTIONS

- Splined shaft
- Integral pinion
- Splined shaft with splined pinion
- Gear cutting ISO 1328 class 9-10
- Gear grinding ISO 1328 class 6-7

### TIP RELIEF

- $rK = 0.1 * m$
- $Caa = 0.01 * m$
- $H = 0.5 * m$



### CROWNING

Assimmetrical crowning



[www.reggianariduttori.com](http://www.reggianariduttori.com)

**REGGIANA RIDUTTORI S.r.l.**

Via Martiri di Marzabotto,7  
42020 - S. Polo d'Enza (RE) - ITALY  
tel. +39.0522.259111 - fax +39.0522.874321  
info@reggianariduttori.com

A member of



is a brand of Reggiana  
Riduttori Srl

